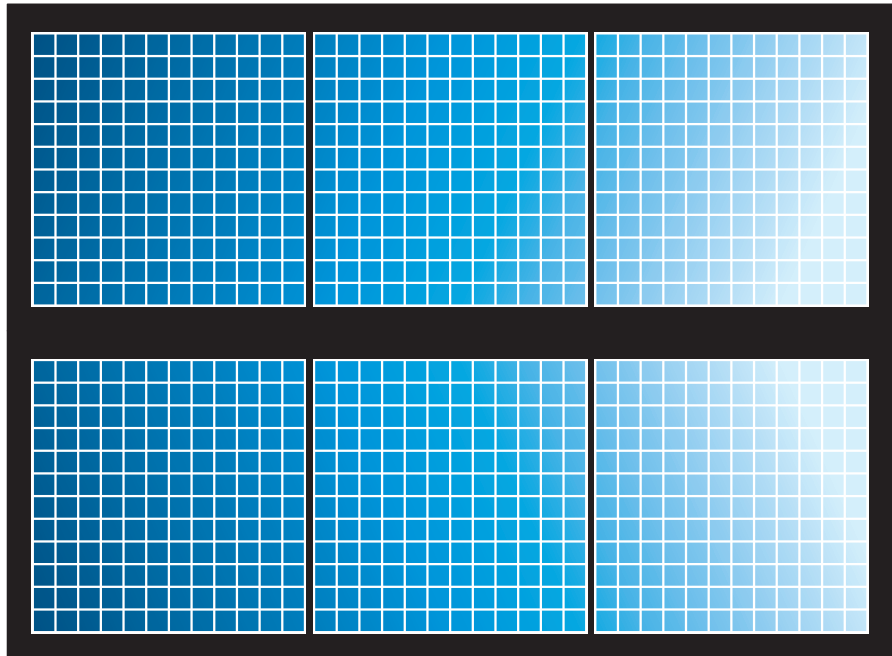
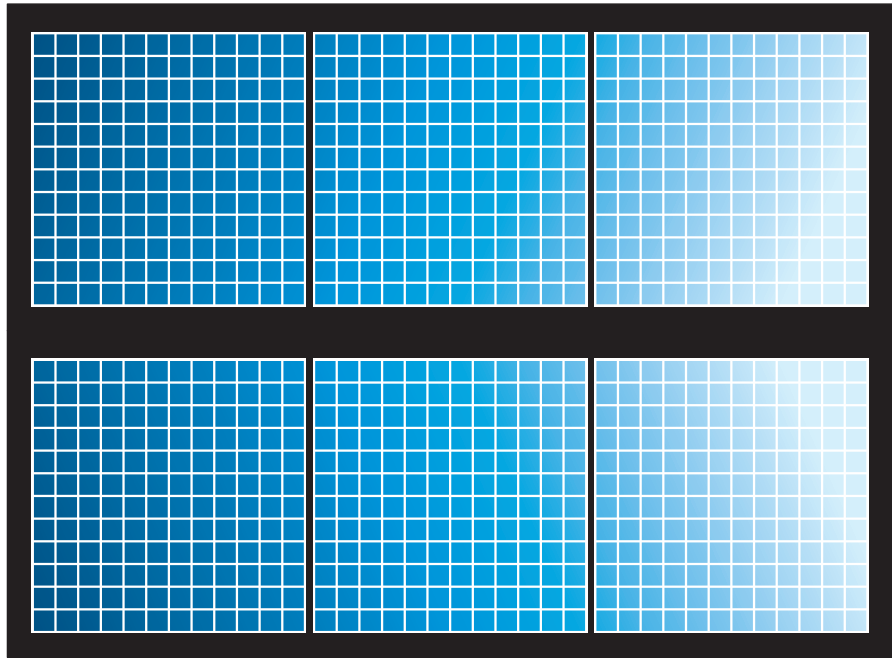


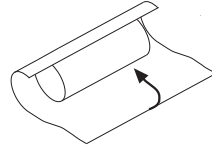
NÁTTÚRUFRAEÐISTOFNUN

Vísindavaka 2024



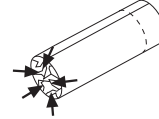
Gervitungl – leiðbeiningar

1



Vefjið álpappír utan um papparúllu

2



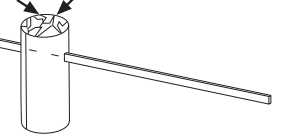
Lokaðu öðrum endanum, láttu hinn endann vera opinn

3



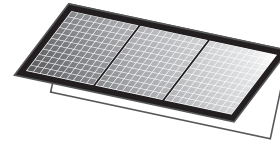
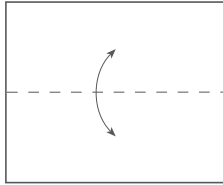
Þrýstu pinnanum í gegnum rúlluna

4



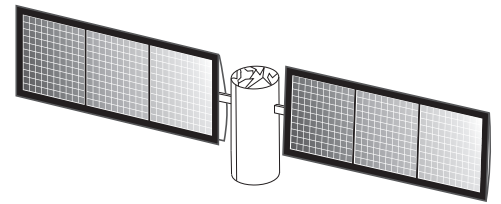
Lokaðu opna enda rúllunnar

5



Klipptu út báða sólarcelluvængina og brjótið þá saman í helminga

6



Límdu vængina á sitt hvorn enda pinnans

